



Technical Advisors for Native Communities

ᐅᓂᓄᓄᓄ ᓄᓂ ᐃᓂᓄᓄ ᐅᐃᓄ ᐃᓂᓄᓄ  
ᐅᓂᓄᓄᐃᓄ ᓄᓂ ᐃᓄᓄᓄ ᐅᐃᓄ ᐃᓂᓄᓄ

## NEWS LETTER

### First Edition of our news letter

My partner Louis Harvey and I are glad to send this first issue of the Bruser bi-monthly news letter. Hoping that this will contribute to enhance the pride in which we serve our clients.

Yours truly,

Serge Simard, T.P.

Président

418-872-8283

### In this issue:

Waskaganish Ballfield...	1
Bruser at National Research	1
Directional drilling in Kawawa...	2
Paul Mameans-kum new President of NDC...	2
Our prayers to our friends at the hospital...	2
Lifting Station Wemindji	3

2005, No 1

September 1st

### Waskaganish Ballfield, a reality!

On August 5th, Waskaganish recreation hosted its first ball tournament at the new stadium.

All Cree communities teams were invited to this grand opening tournament. The facility was constructed by the Cree Nation of Waskaganish Capital Works Department under the project Management/Design of Bruser & Associates. The construction cost is over half a million dollars.

Particular construction in a swamp and extensive drainage works were the most significant costs for the project. The Crees of Waskaganish succeeded in optimizing the use of local resources.

Thanks to M. Réjean Roy from Construction Nord-roy inc. who has acted as general foreman hired by the Band for the project.

Special congratulations to the

client's representatives: Lance Brown and Charles J. Hester.

GENERAL CONTRACTING;  
Waskaganish Capital Works

MAIN SUB-CONTRACTORS  
& SUPPLIERS:

Construction ROPAC (lighting & underground electrification)

Québec City

COLBO (fencing & Backstop)

Québec City

MONTAINVIEW TURF

Ottawa



### Bruser at the National Research Council

In July 2005, M. Serge Smard, T.Sc.A. has been nominated as a voting board member of the CCCME for a 3 years mandate. The Canadian Commission on Construction Materials Evaluation (CCCME) established by the National Research Council (NRC) to:

Support; innovation; technology transfer; productivity and competitiveness in the Canadian construction industry; and Enhance: Public safety in the built environment through: the development and maintenance of a technically and administratively sound system for the evaluation of new products for fitness of purpose that has national and international credibility;

the promotion, on a national basis, of product information and listing services based on recognized product standards; and the encouragement of the export of Canadian construction products and services. The CCCME provides general policies for and technical advice to the Canadian Construction Materials Centre (CCMC).

## Directional drilling in Kawawachikamach...

Lot 1—Civil Works of the Naskapi long awaited drinking water project is under construction. 750K will be spent this summer and the 2MM project will be completed next summer.

Environmentally friendly boring technique has been retained for this project; directional drilling under Peter's lake for one 165 meters long 6" dia. emissary and one 280 meters long 12" dia water intake. The selected pipe is High Density Polyethylene Pipe (HDPE).

So far the emissary line has been bored successfully within 6" of the targeted exit point in the lake. The pipe is being ready to be pulled to shore by the experienced team of Technologie Directionelle Inc. Under the supervision of Charles Tétrault and his son Gabriel.

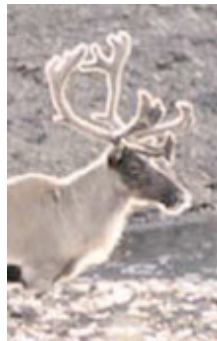
Jean Francois Blais, Eng. From Brusser and associates is supervising the works.

Keep it up guys!



## Paul Mameanskum, Pres. Naskapi Development Corp.

Paul's leadership has been again recognised as he was elected at the presidency of the Naskapi Development Corporation a few weeks ago. The director of Public Works has also been the lead organiser of this weekend's helters and women gathering in Kawawachikamach; a tremendous achievement that proves again the great value of M. Mameanskum for the Naskapi Community.



« Soon we'll be celebrating our 10th year anniversary »

## ...prayers for our hospitalized friends

Ours thoughts are with Gilles Porlier from Schefferville who was recently hospitalized after a heart attack. He is now recovering in Québec City.

titute, a Naskapi Heavy Machinery operators is recovering successfully from this rare health problem that affected him this summer.

Our prayers also goes to Gilles Godebois, foreman for Tawich Construction in Wemindji, who's fighting cancer.

We are also glad that Joe Peas-



## Lifting Station — Cree Nation of Wemindji

The reconstruction of the sewage lifting station is now completed and operational. The \$300 000 Project went well with no cost overrun, in a internal project management construction using Tawich Construction inc.

The new infrastructure is designed for 15 years.

An electrical power back up equipment is actually being evaluated to serve the lifting station as well as other municipal infrastructure.

The Cree Nation of Wemindji has become a very important client in Bruser's operation and we want to take this opportunity to make sure the CNW knows Bruser's staff appreciate working for this proud community !!!



Engineering - Construction Project Managers

7636, Wilfrid –Hamel  
 Sainte foy  
 Quebec  
 G2G 1C1  
 418 872 8283 (Quebec)  
 418 585 3294 (Scheffer ville)

From James-Baie and Scheffer ville  
 Toll free 1-800-927-3270